

F20MF



FLAT SUCTION CUP WITH CLEATS, MARK FREE

- ▶ Suction cup of TPU, a mark free material that leaves no trace on the object being handled.
- ▶ Suitable for flat surfaces.
- ▶ Good stability and little inherent movement.
- ▶ Recommended when the lifting force is parallel to the surface of the object.

LIFTING FORCES & TECHNICAL DATA

Lifting force vertical to the surface, N, at vacuum level			Lifting force parallel to the surface, N, at vacuum level			Volume cm ³	Min. curve radius mm	Max. vertical movement mm	Weight rubber part g
20 -kPa	60 -kPa	90 -kPa	20 -kPa	60 -kPa	90 -kPa				
3.6	14.5	22.0	8.0	14.5	21.0	1.0	18	2.0	1.2

MATERIAL SPECIFICATIONS

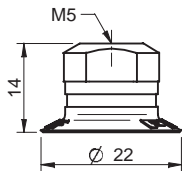
Material	Colour	Hardness °Shore A	Temperature range °C
Thermoelastic polyurethane, TPU	Transparent white	81	-20–80

MATERIAL RESISTANCE

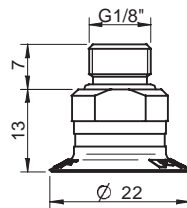
Wear resistance	Oil	Weather & Ozone	Hydrolysis	Petrol	Concentrated acids	Alcohol	Oxidation
Excellent	Excellent	Excellent	Poor	Poor	Poor	Good	Good

ORDERING INFORMATION

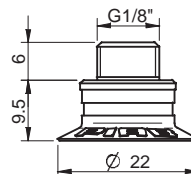
Complete suction cups		Art. No.
A	Suction cup F20MF Thermoelastic polyurethane, M5 female	0101281
B	Suction cup F20MF Thermoelastic polyurethane, G1/8" male, with mesh filter	0101282
B	Suction cup F20MF Thermoelastic polyurethane, G1/8" male, with mesh filter and dual flow control valve	0101288
C	Suction cup F20MF Thermoelastic polyurethane, G1/8" male / M5 female, with mesh filter	0101286
C	Suction cup F20MF Thermoelastic polyurethane, G1/8" male / M5 fem., with dual flow control valve	0101290
D	Suction cup F20MF Thermoelastic polyurethane, 5xM5 female	0101285
D	Suction cup F20MF Thermoelastic polyurethane, 5xM5 female, with dual flow control valve	0101291



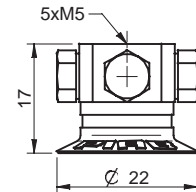
A



B

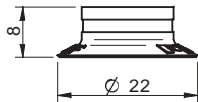


C



D

Rubber parts		Art. No.
Suction cup F20MF Thermoelastic polyurethane		0101139



Fittings		Art. No.
Fitting M5 female		3250003
Fitting M5 female, with dual flow control valve		3251001
Fitting G1/8" male, with mesh filter		3250085
Fitting G1/8" male, with mesh filter and dual flow control valve		3251002
Fitting G1/8" male/M5 female, with mesh filter		0101152
Fitting G1/8" male/M5 female, with dual flow control valve		3251004
Fitting 5xM5 female		0100260
Fitting 5xM5 female, with dual flow control valve		3251005
Fitting G1/8" male/M5 female, PA		3150196

For further information and dimensioned drawings, see *SUCTION CUPS FITTINGS* chapter.

Suction cups
F-MF